

Mountain Maryland Energy Advisory Committee

December 11, 2013, 3:00 p.m., Garrett County Airport, McHenry, Maryland

Meeting Minutes

Committee members attending: Mike Koch, Tim Carney, Jim Torrington, Paul Durham, Dr. Ed Gates, Jo Gilman, Mike Dreisbach, Eric Guthrie, Bob Sutton

Committee members not in attendance: Rodney Glotfelty, Dr. Stephen Hartlaub, David Dorsey

Others attending: Jeff Simcoe, Cheryl DeBerry, Andrea Varrato

In the temporary absence of chair Mike Koch, Cheryl DeBerry opened the meeting at 3:02 pm by welcoming the members and thanking them for their service to the committee.

Committee member introductions:

Committee members were invited to introduce themselves and provide a short description of their background related to the energy issue.

Review Committee Charge (Attachment A) and Member Description (Attachment B) documents:

Chair Koch provided background to committee members about previous energy related efforts made by Garrett County and answered questions about committee member responsibilities and the committee charge.

Review Maryland open meeting laws and 'rules of engagement':

Mr. Simcoe reviewed the 'rules of engagement' for the committee members and provided guidance on the Maryland open meeting laws. One committee member had already taken the open meeting laws class and obtained a certificate. Members were encouraged to take the class as well.

Review work process framework:

Chair Koch shared the major components of the work process framework for the committee (*Attachment C*). For sharing of resources and communicating with one another outside of meetings, Mike Koch suggested a working blog that is publically viewable but editable only by committee members. Emails can be sent to Cheryl DeBerry to be aggregated and sent to all committee members on a weekly basis.

Review topics to be covered:

The group was invited to suggest subject matter experts with expertise that may be of service to the committee. Subject matter experts will be invited to meetings once the meeting topics are set.

Expected outcomes:

Chair Koch outlined the vision of committee outcomes, which are expected to be as practical and results oriented as possible. Recommendations from the committee should provide direct, real value to Garrett and Allegany County commissioners. There will be a need to gain consensus for county recommendations. Committee members suggested that more controversial items be presented as potential opportunities that note both pros and cons of both sides or as recommendations with caveats. Committee members agreed

that particular attention should be given to differences in zoning, infrastructure, etc. between Garrett and Allegany counties and how those differences would change the recommendations of the committee.

Discussion:

The next meeting, on January 8, 2014, will have a broad scope and will focus on global and nationwide energy trends. At the meeting, any impractical opportunities (e.g., off shore wind) should be discarded so that the group can focus on opportunities that are viable for Garrett and Allegany counties. **[NOTE: The January meeting of the MMEAC was originally scheduled for January 8, 2014 but due to conflicts was moved to January 15, 2014. This change was made after the adjournment of the December 11, 2013 meeting. The website was updated immediately to inform the public of the change.]**

Adjourn:

A motion was made by Mike Dreisbach, seconded by Tim Carney, to adjourn at 5:00 p.m.



Mountain Maryland Energy Advisory Committee (MMEAC) Committee Responsibilities

MMEAC Charge:

Garrett County has a long history of energy production due to the presence and abundance of a variety of natural resources. Traditional resource extraction has played a significant role in the county and has provided much needed sources of revenue that continue to support needs of the county and its citizens. This tradition will likely continue but there are a host of additional opportunities that can be investigated to support diversification in energy production that could benefit the county and its citizens. A long-term focus and commitment to exploring all available energy production avenues, while identifying and mitigating potential risks, represent the charge of the Mountain Maryland Energy Advisory Committee.

In addition, the Mountain Maryland Energy Advisory Committee members will generate and document program and policy suggestions that will allow the Garrett County Board of Commissioners to explore a broad-based portfolio approach with an emphasis on guiding energy sector growth while maximizing jobs and other economic benefits while mitigating any negative effects.

The Approach:

The committee will use community input, expert presentations, and other research to develop a comprehensive document that can be leveraged to coordinate, manage, and focus energy development. This committee work product will include specific policy recommendations for the Garrett County Board of Commissioners to consider. The committee will explore opportunities in all energy sectors, including traditional and renewable approaches, as well as explore incentives and programs at both the county and state levels to help guide each sector's growth in a responsible way.

The Timeline:

With the help of a consultant, Downstream Strategies, LLC, this committee will complete its work through a series of committee-only working meetings, public meetings, and community outreach within 18 months.

The Consultant:

Downstream Strategies offers environmental consulting services that combine sound interdisciplinary skills with the core belief in the importance of protecting the environment and linking economic development with natural resource stewardship.



Mountain Maryland Energy Advisory Committee (MMEAC) Member Description

MMEAC Charge:

Garrett County has a long history of energy production due to the presence and abundance of a variety of natural resources. Traditional resource extraction has played a significant role in the county and has provided much needed sources of revenue that continue to support needs of the county and its citizens. This tradition will likely continue but there are a host of additional opportunities that can be investigated to support diversification in energy production that could benefit the county and its citizens. A long-term focus and commitment to exploring all available energy production avenues, while identifying and mitigating potential risks, represent the charge of the Mountain Maryland Energy Advisory Committee.

In addition, the Mountain Maryland Energy Advisory Committee members will generate and document program and policy suggestions that will allow the Garrett County Board of Commissioners to explore a broad-based portfolio approach with an emphasis on guiding energy sector growth while maximizing jobs and other economic benefits while mitigating any negative effects.

Member Responsibilities:

- Assist the Chairman and consultant in carrying out the charge of the MMEAC
- Assist the Chairman and consultant in developing the operational structure of the committee and participate in establishing realistic goals
- Determine and provide availability for MMEAC meetings
- Attend MMEAC meetings, either in person or through remote meeting technology
- Assist with the generation of energy related policy covering various energy sectors
- Prepare for meetings by reviewing committee materials ahead of scheduled meetings
- Engage in thoughtful dialogue and participate in a process to reach consensus on policy recommendations that support the MMEAC charge
- Help identify known subject matter experts to present on various topics in support of the MMEAC charge
- Assist with the development of the final work product by providing suggestions, comments, edits, and general engagement in the process

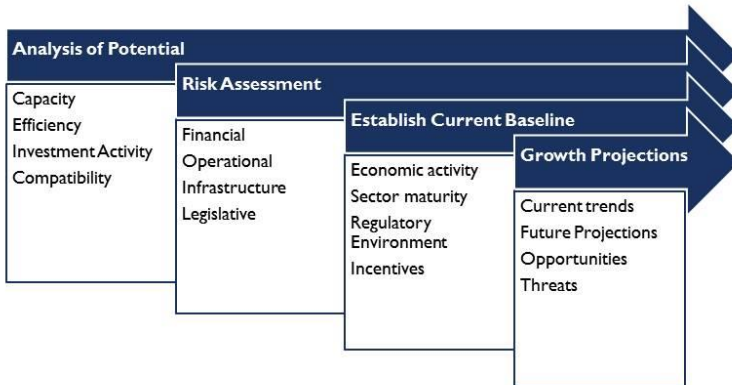
MOUNTAIN MARYLAND ENERGY ADVISORY COMMITTEE

WORK PROCESS FRAMEWORK

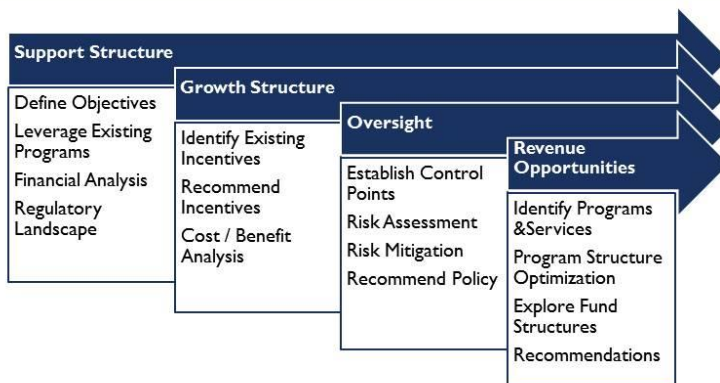


CURRENT ENERGY SECTOR OVERVIEW & PRIORITIZATION

- Initial focus on broad global/US trends with a drill down on MD/Mountain MD.
- Identify & discuss opportunities that exist within current governmental, residential, commercial, and industrial sectors.
- Prioritize these opportunities and seek ways to “bundle” as energy sector focus arenas.
- Prepare recommendations for short-term programmatic action.



FOCUSED OPPORTUNITY ANALYSIS & RECOMMENDATIONS



- Focused longer-term opportunity topics will fall out of prioritization exercise.
- Identify and discuss high value opportunities not supported in current environment.
- Work process will be outcome driven:
 - High priority will be given to energy sectors where favorable most conditions currently exist
 - Energy sector barriers and their magnitude will be identified; recommendations will be developed to address targeted barriers.

EXAMPLES OF POTENTIAL FOCUS AREAS

Centralized Energy Production

- Fuel switching
- Biomass co-firing
- Energy crops
- Gasification (coal, biomass)
- Solar PV
- Wind
- Hydro

Distributed Energy Production

- Residential / commercial solar PV
- Solar hot water heating
- Wind
- Micro turbines
- Geothermal
- Energy efficiency
- Energy Storage