

CHAPTER 10

SIGN REGULATIONS

User note:

About this chapter: The primary purpose of Chapter 10 is to establish the regulation for the use of signs and sign structures, including general signs, roof signs, wall signs and fascia signs. This chapter also contains the general provisions that apply to sign placement, maintenance, repair and removal, as well as requirements for wall, free-standing, directional and temporary signs.

SECTION 1001 PURPOSE

1001.1 Purpose. The purpose of this chapter is to protect the safety and orderly development of the community through the regulation of signs and sign structures.

SECTION 1002 DEFINITIONS

1002.1 Definitions. The following words and terms shall, for the purposes of this chapter and as used elsewhere in this code, have the meanings shown herein.

ABANDONED SIGN. A sign structure that has ceased to be used, and the owner intends no longer to have used, for the display of sign copy, or as otherwise defined by state law.

ANIMATED SIGN. A sign employing actual motion or the illusion of motion. Animated signs, which are differentiated from changeable signs as defined and regulated by this code, include the following types:

Electrically activated. Animated signs producing the illusion of movement by means of electronic, electrical or electro-mechanical input and/or illumination capable of simulating movement through employment of the characteristics of one or both of the classifications noted in Items 1 and 2 as follows:

1. **Flashing.** Animated signs or animated portions of signs where the illumination is characterized by a repetitive cycle in which the period of illumination is either the same as or less than the period of nonillumination. For the purposes of this ordinance, flashing will not be defined as occurring if the cyclical period between on-off phases of illumination exceeds 4 seconds.
2. **Patterned illusionary movement.** Animated signs or animated portions of signs where the illumination is characterized by simulated movement through alternate or sequential activation of various illuminated elements for the purpose of producing repetitive light patterns designed to appear in some form of constant motion.

Environmentally activated. Animated signs or devices motivated by wind, thermal changes or other natural environmental input. Includes spinners, pinwheels, pennant strings, and/or other devices or displays that respond to naturally occurring external motivation.

Mechanically activated. Animated signs characterized by repetitive motion and/or rotation activated by a mechanical system powered by electric motors or other mechanically induced means.

ARCHITECTURAL PROJECTION. Any projection that is not intended for occupancy and that extends beyond the face of an exterior wall of a building, but that does not include signs as defined herein. See also "Awning;" "Backlit awning;" and "Canopy, Attached and Free-standing."

AWNING. An architectural projection or shelter projecting from and supported by the exterior wall of a building and composed of a covering of rigid or nonrigid materials and/or fabric on a supporting framework that may be either permanent or retractable, including such structures that are internally illuminated by fluorescent or other light sources.

AWNING SIGN. A sign displayed on or attached flat against the surface or surfaces of an awning. See also "Wall or fascia sign."

BACKLIT AWNING. An awning with a translucent covering material and a source of illumination contained within its framework.

BANNER. A flexible substrate on which copy or graphics may be displayed.

BANNER SIGN. A sign utilizing a banner as its display surface.

BILLBOARD. See "Off-premise sign" and "Outdoor advertising sign."

BUILDING ELEVATION. The entire side of a building, from ground level to the roofline, as viewed perpendicular to the walls on that side of the building.

CANOPY (Attached). A multisided overhead structure or architectural projection supported by attachments to a building on one or more sides and either cantilevered from such building or supported by columns at additional points. The surface(s) and/or soffit of an attached canopy may be illuminated by means of internal or external sources of light. See also "Marquee."

CANOPY (Free-standing). A multisided overhead structure supported by columns, but not enclosed by walls. The surface(s) and/or soffit of a free-standing canopy may be illuminated by means of internal or external sources of light.

CANOPY SIGN. A sign affixed to the visible surface(s) of an attached or free-standing canopy. For reference, see Section 1003.

SIGN REGULATIONS

CHANGEABLE SIGN. A sign with the capability of content change by means of manual or remote input, including signs that are:

Electrically activated. Changeable sign where the message copy or content can be changed by means of remote electrically energized on-off switching combinations of alphabetic or pictographic components arranged on a display surface. Illumination may be integral to the components, such as characterized by lamps or other light-emitting devices; or it may be from an external light source designed to reflect off the changeable component display. See also “Electronic message sign or center.”

Manually activated. Changeable sign where the message copy or content can be changed manually.

COMBINATION SIGN. A sign that is supported partly by a pole and partly by a building structure.

COPY. Those letters, numerals, figures, symbols, logos and graphic elements comprising the content or message of a sign, excluding numerals identifying a street address only.

DEVELOPMENT COMPLEX SIGN. A free-standing sign identifying a multiple-occupancy development, such as a shopping center or planned *industrial* park, that is controlled by a single owner or landlord, approved in accordance with Section 1009.2 of this chapter.

DIRECTIONAL SIGN. Any sign that is designed and erected for the purpose of providing direction and/or orientation for pedestrian or vehicular traffic.

DOUBLE-FACED SIGN. A sign with two faces, back to back.

ELECTRIC SIGN. Any sign activated or illuminated by means of electrical energy.

ELECTRONIC MESSAGE SIGN OR CENTER. An electrically activated changeable sign where the variable message capability can be electronically programmed.

EXTERIOR SIGN. Any sign placed outside a building.

FASCIA SIGN. See “Wall or fascia sign.”

FLASHING SIGN. See “Animated sign, electrically activated.”

FREE-STANDING SIGN. A sign principally supported by a structure affixed to the ground, and not supported by a building, including signs supported by one or more columns, poles or braces placed in or on the ground. For visual reference, see Section 1003.

FRONTAGE (Building). The length of an exterior building wall or structure of a single premise orientated to the public way or other properties that it faces.

FRONTAGE (Property). The length of the property line(s) of any single premise along either a public way or other properties on which it borders.

GROUND SIGN. See “Free-standing sign.”

ILLUMINATED SIGN. A sign characterized by the use of artificial light, either projecting through its surface(s) (internally illuminated); or reflecting off its surface(s) (externally illuminated).

INTERIOR SIGN. Any sign placed within a building, but not including “window signs” as defined by this ordinance.

Interior signs, with the exception of window signs as defined, are not regulated by this chapter.

MANSARD. An inclined decorative roof-like projection that is attached to an exterior building facade.

MARQUEE. See “Canopy (attached).”

MARQUEE SIGN. See “Canopy sign.”

MENU BOARD. A free-standing sign orientated to the drive-through lane for a restaurant that advertises the menu items available from the drive-through window, and which has not more than 20 percent of the total area for such a sign utilized for business identification.

MULTIPLE-FACED SIGN. A sign containing three or more faces.

OFF-PREMISE SIGN. See “Outdoor advertising sign.”

ON-PREMISE SIGN. A sign erected, maintained or used in the outdoor environment for the purpose of the display of messages appurtenant to the use of, products sold on, or the sale or lease of, the property on which it is displayed.

OUTDOOR ADVERTISING SIGN. A permanent sign erected, maintained or used in the outdoor environment for the purpose of the display of commercial or noncommercial messages not appurtenant to the use of, products sold on, or the sale or lease of, the property on which it is displayed.

PARAPET. The extension of a building facade above the line of the structural roof.

POLE SIGN. See “Free-standing sign.”

POLITICAL SIGN. A temporary sign intended to advance a political statement, cause or candidate for office. A legally permitted outdoor advertising sign shall not be considered to be a political sign.

PORTABLE SIGN. Any sign not permanently attached to the ground or to a building or building surface.

PROJECTING SIGN. A sign other than a wall sign that is attached to or projects more than 18 inches (457 mm) from a building face or wall or from a structure where the primary purpose is other than the support of a sign. For visual reference, see Section 1003.

REAL ESTATE SIGN. A temporary sign advertising the sale, lease or rental of the property or premises on which it is located.

REVOLVING SIGN. A sign that revolves 360 degrees (6.28 rad) about an axis. See also “Animated sign, mechanically activated.”

ROOF LINE. The top edge of a peaked roof or, in the case of an extended facade or parapet, the uppermost point of said facade or parapet.

ROOF SIGN. A sign mounted on, and supported by, the main roof portion of a building, or above the uppermost edge of a parapet wall of a building and that is wholly or partially supported by such a building. Signs mounted on mansard facades, pent eaves and architectural projections such as canopies or marquees shall not be considered to be roof signs. For a visual reference, and a comparison of differences between roof and fascia signs, see Section 1003.

SIGN. Any device visible from a public place that displays either commercial or noncommercial messages by means of graphic presentation of alphabetic or pictorial symbols or rep-

resentations. Noncommercial flags or any flags displayed from flagpoles or staffs will not be considered to be signs.

SIGN AREA. The area of the smallest geometric figure, or the sum of the combination of regular geometric figures, that comprise the sign face. The area of any double-sided or “V” shaped *sign* shall be the area of the largest single face only. The area of a sphere shall be computed as the area of a circle. The area of all other multiple-sided signs shall be computed as 50 percent of the sum of the area of all faces of the *sign*.

SIGN COPY. Those letters, numerals, figures, symbols, logos and graphic elements comprising the content or message of a *sign*, exclusive of numerals identifying a street address only.

SIGN FACE. The surface on, against or through which the *sign* copy is displayed or illustrated, not including structural supports, architectural features of a building or sign structure, nonstructural or decorative trim, or any areas that are separated from the background surface on which the sign copy is displayed by a distinct delineation, such as a reveal or border. See Section 1003.

1. In the case of panel or cabinet-type signs, the sign face shall include the entire area of the sign panel, cabinet or face substrate on which the *sign* copy is displayed or illustrated, but not open space between separate panels or cabinets.
2. In the case of *sign* structures with routed areas of sign copy, the *sign* face shall include the entire area of the surface that is routed, except where interrupted by a reveal, border, or a contrasting surface or color.
3. In the case of signs painted on a building, or individual letters or graphic elements affixed to a building or structure, the *sign* face shall comprise the sum of the geometric figures or combination of regular geometric figures drawn closest to the edge of the letters or separate graphic elements comprising the *sign* copy, but not the open space between separate groupings of sign copy on the same building or structure.
4. In the case of *sign* copy enclosed within a painted or illuminated border, or displayed on a background contrasting in color with the color of the building or structure, the *sign* face shall comprise the area within the contrasting background, or within the painted or illuminated border.

SIGN STRUCTURE. Any structure supporting a sign.

TEMPORARY SIGN. A sign intended to display either commercial or noncommercial messages of a transitory or temporary nature. Portable signs or any sign not permanently embedded in the ground, or not permanently affixed to a building or *sign* structure that is permanently embedded in the ground, are considered temporary signs.

UNDER CANOPY SIGN OR UNDER MARQUEE SIGN. A sign attached to the underside of a *canopy* or marquee.

V SIGN. Signs containing two faces of approximately equal size, erected on common or separate structures, positioned in a “V” shape with an interior angle between faces of not more than 90 (1.57 rad) degrees with the distance between the sign faces not exceeding 5 feet (1524 mm) at their closest point.

WALL OR FASCIA SIGN. A *sign* that is in any manner affixed to any exterior wall of a building or structure and that projects not more than 18 inches (457 mm) from the building or structure wall, including signs affixed to architectural projections from a building provided that the copy area of such signs remains on a parallel plane to the face of the building facade or to the face or faces of the architectural projection to which it is affixed. For a visual reference and a comparison of differences between wall or fascia signs and roof signs, see Section 1003.

WINDOW SIGN. A *sign* affixed to the surface of a window with its message intended to be visible to and readable from the public way or from adjacent property.

SECTION 1003 GENERAL SIGN TYPES

1003.1 General. Sign types and the computation of *sign* area shall be as depicted in Figures 1003.1(1) through 1003.1(4).

SECTION 1004 GENERAL PROVISIONS

1004.1 Conformance to codes. Any sign hereafter erected shall conform to the provisions of this ordinance and the provisions of the *International Building Code* and of any other ordinance or regulation within this jurisdiction.

1004.2 Signs in rights-of-way. Signs other than an official traffic sign or similar sign shall not be erected within 2 feet (610 mm) of the lines of any street, or within any public way, unless specifically authorized by other ordinances or regulations of this jurisdiction or by specific authorization of the code official.

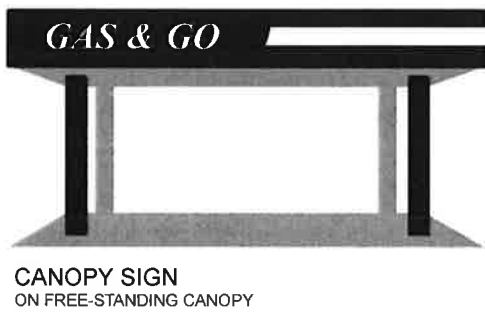
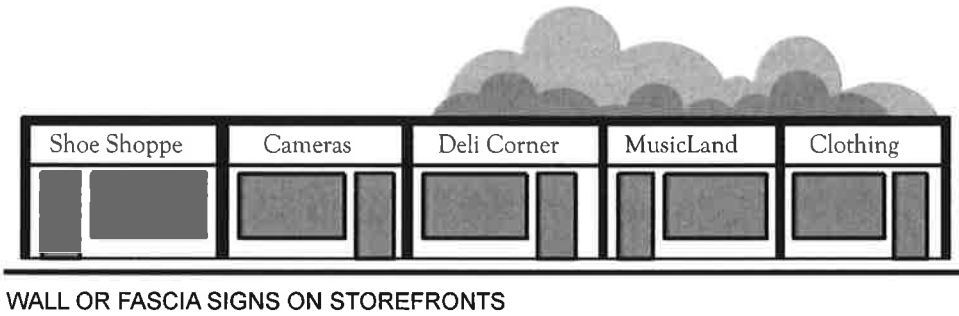
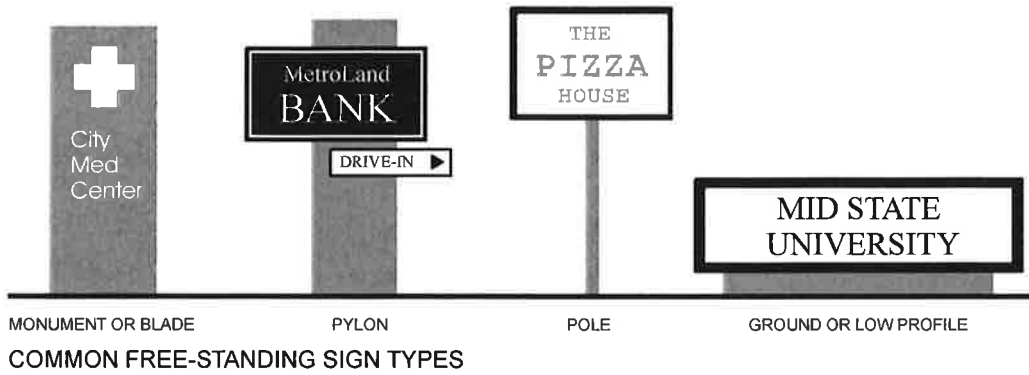
1004.3 Projections over public ways. Signs projecting over public walkways shall be permitted to do so only subject to the projection and clearance limits either defined herein or, if not so defined, at a minimum height of 8 feet (2438 mm) from *grade* level to the bottom of the sign. Signs, architectural projections or *sign* structures projecting over vehicular access areas must conform to the minimum height clearance limitations imposed by the jurisdiction for such structures.

1004.4 Traffic visibility. Signs or sign structures shall not be erected at the intersection of any street in such a manner as to obstruct free and clear vision, nor at any location where by its position, shape or color it may interfere with or obstruct the view of or be confused with any authorized traffic sign, signal or device.

1004.5 Computation of frontage. If a premises contains walls facing more than one property line or encompasses property frontage bounded by more than one street or other property usages, the sign area(s) for each building wall or property frontage will be computed separately for each building wall or property line facing a different frontage. The sign area(s) thus calculated shall be permitted to then be applied to permitted signs placed on each separate wall or property line frontage.

1004.6 Animation and changeable messages. Animated signs, except as prohibited in Section 1006, are permitted in commercial and *industrial* zones only. Changeable signs,

SIGN REGULATIONS



**FIGURE 1003.1(1)
GENERAL SIGN TYPES**

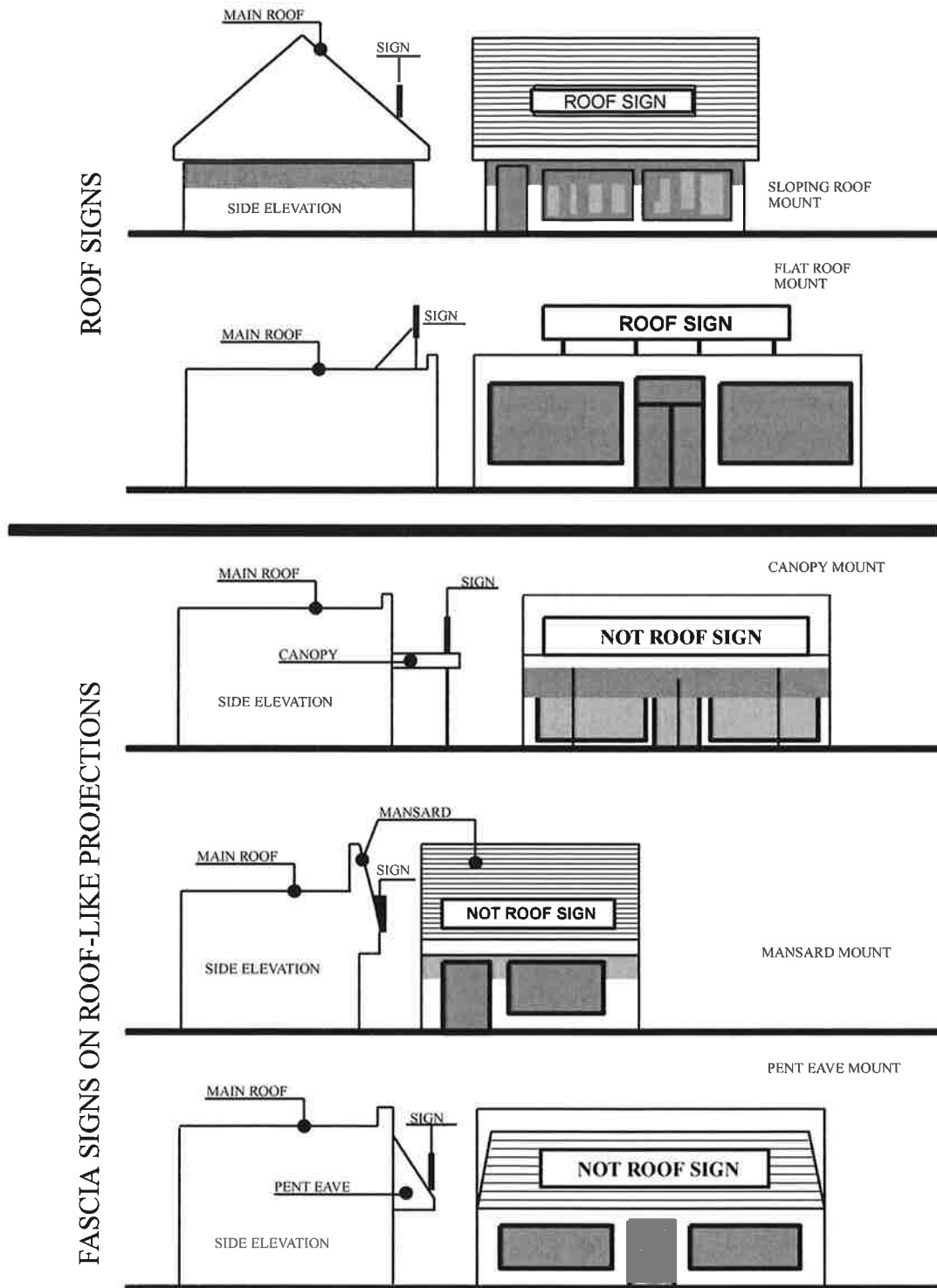
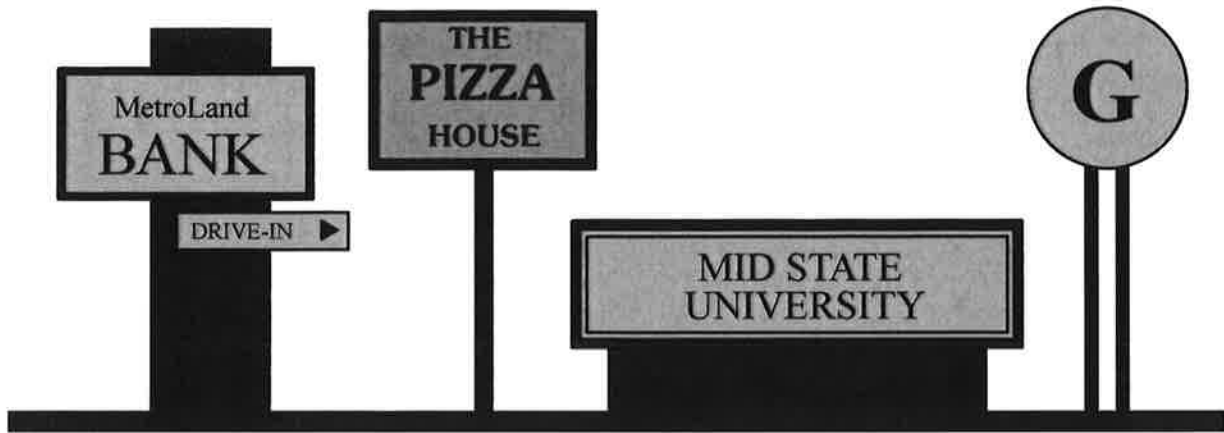
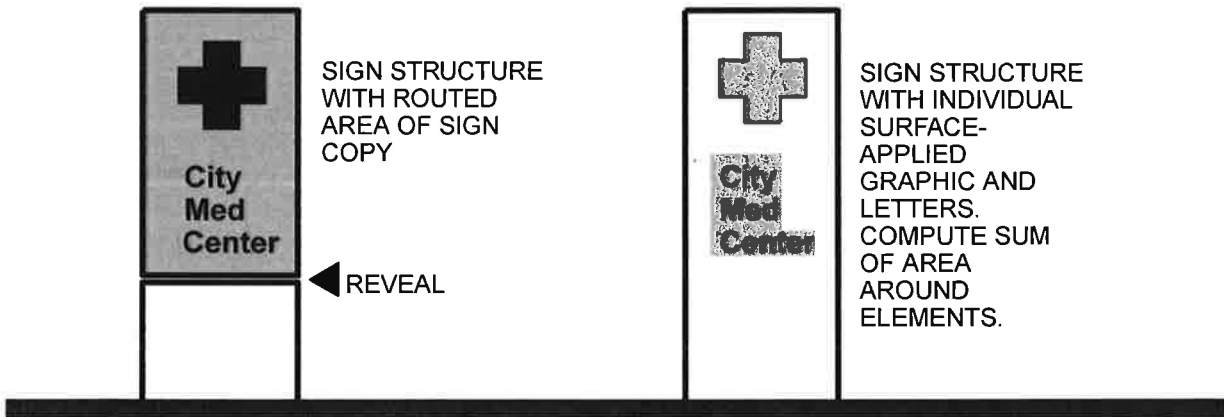


FIGURE 1003.1(2)
COMPARISON—ROOF AND WALL OR FASCIA SIGNS

SIGN REGULATIONS

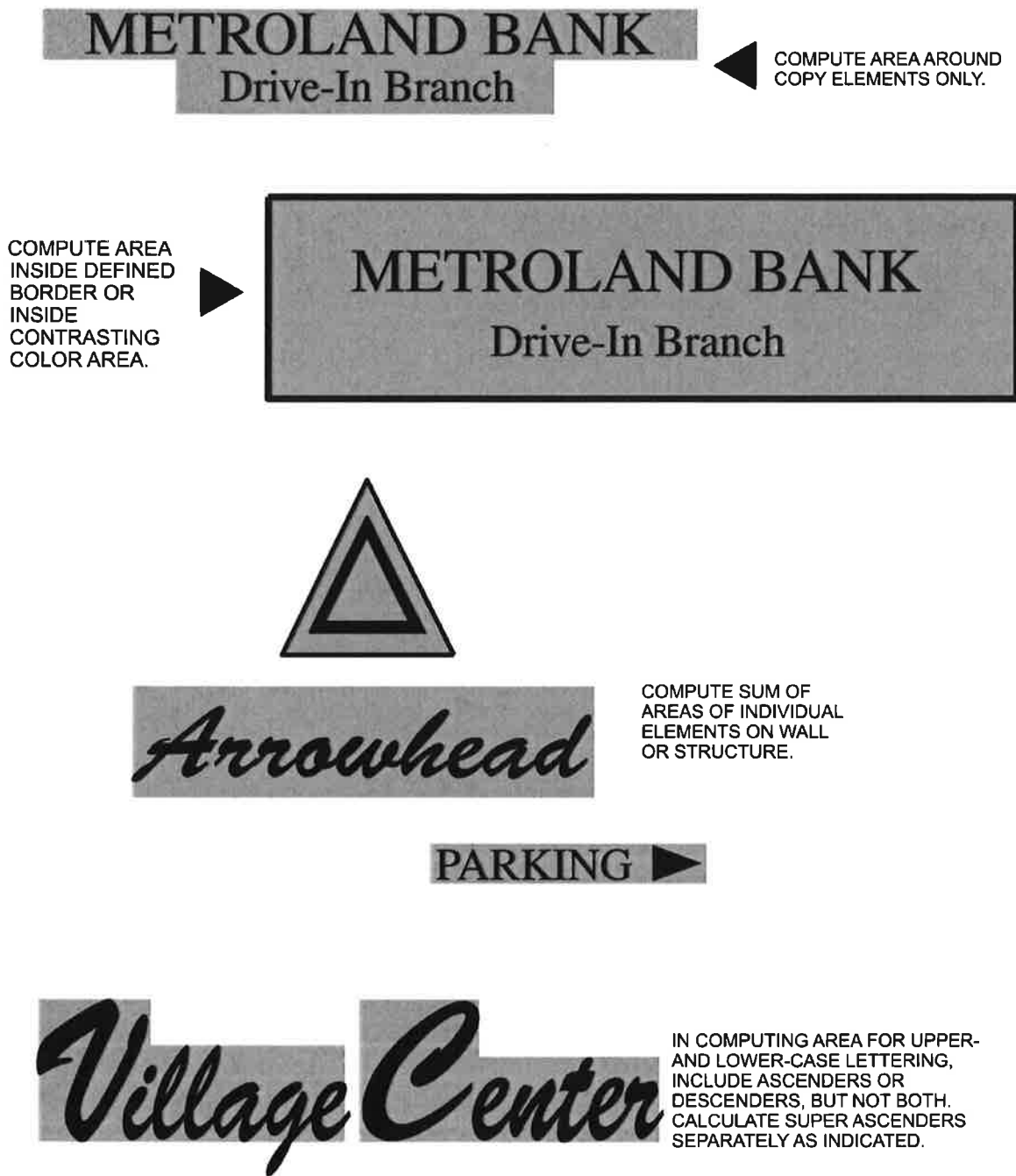


SIGN STRUCTURES



Notes: Sum of shaded areas only represents sign area. Sign constructed with panels or cabinets.

FIGURE 1003.1(3)
SIGN AREA—COMPUTATION METHODOLOGY



Notes: Sum of shaded areas only represents sign area for code compliance purposes. Examples of signs consisting of individual letters, elements or logos placed on building walls or structures.

**FIGURE 1003.1(4)
SIGN AREA—COMPUTATION METHODOLOGY**