

## **Sewer Requirements**

**Effective 7/1/19**

**Backwater valves are required for all Grinder Pump Systems**

**Backwater valves are required on Gravity Systems where the plumbing fixtures are below the level of the first upstream manhole.**

**Backwater valves located inside and outside shall be readily accessible for servicing.**

**Backwater valves shall be installed on the building drain pipe that receives flow only from fixtures that are subject to backflow, not from fixtures on upper floors, that are not subject to backflow.**

**No floor drains are allowed on public sewer.**

**Open sight drains in basements and crawlspaces require a PVC check valve.**

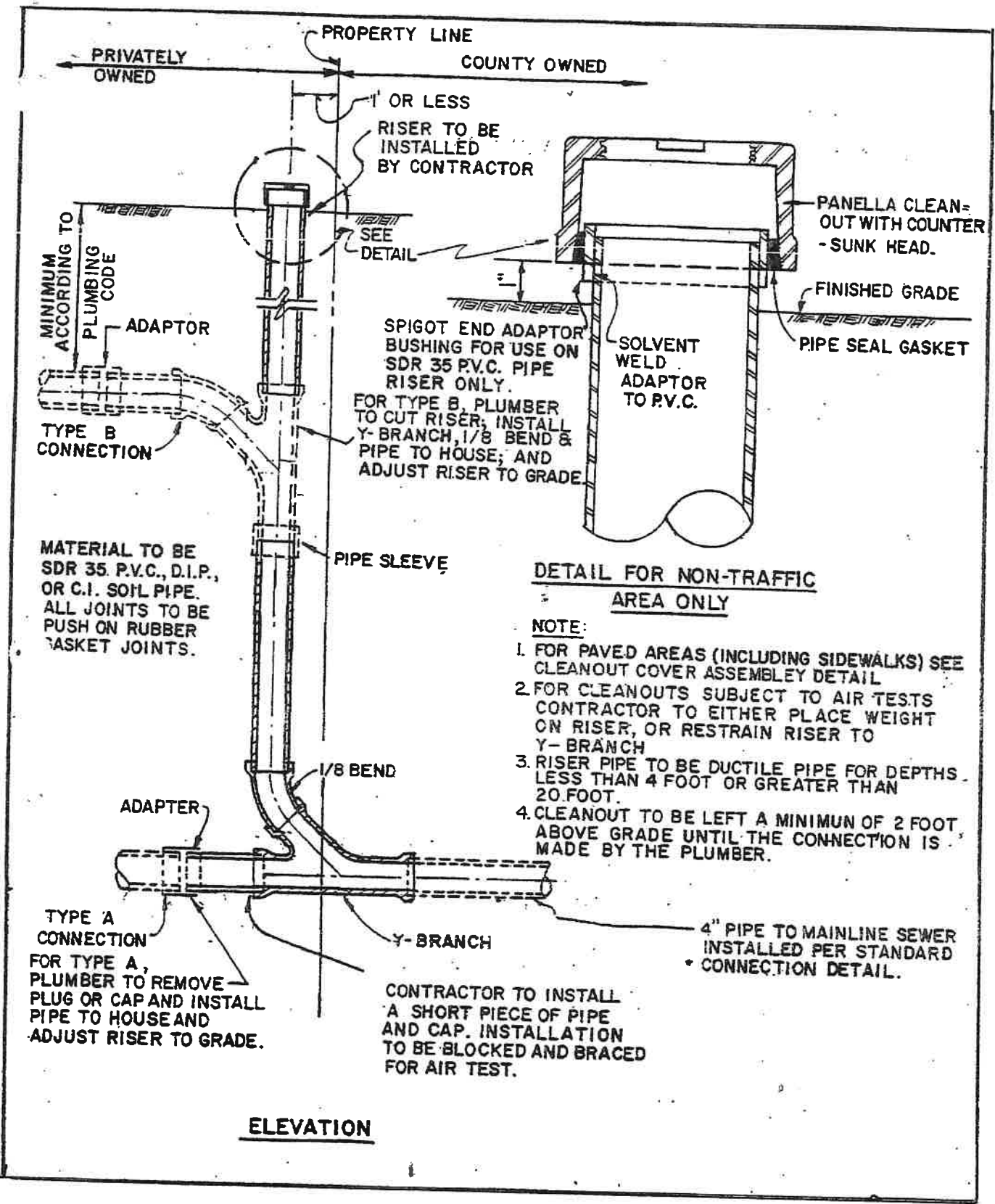
**Fernco fitting used underground will require a shear band.**

**No sump or storm water shall be discharged into the sewer.**

**Sewer shall have a clean out at the foundation and every 75' on a straight run.**

**Sewer clean outs that are located in traffic area shall have a "Lamp Pole" frame and cover to protect from vehicle damaging clean out.**

**Sewer shall be backfilled with approved material.**



MINIMUM ACCORDING TO PLUMBING CODE

ADAPTOR

TYPE B CONNECTION

MATERIAL TO BE SDR 35 P.V.C., D.I.P., OR C.I. SOIL PIPE. ALL JOINTS TO BE PUSH ON RUBBER GASKET JOINTS.

ADAPTER

TYPE A CONNECTION

FOR TYPE A, PLUMBER TO REMOVE PLUG OR CAP AND INSTALL PIPE TO HOUSE AND ADJUST RISER TO GRADE.

PIPE SLEEVE

1/8 BEND

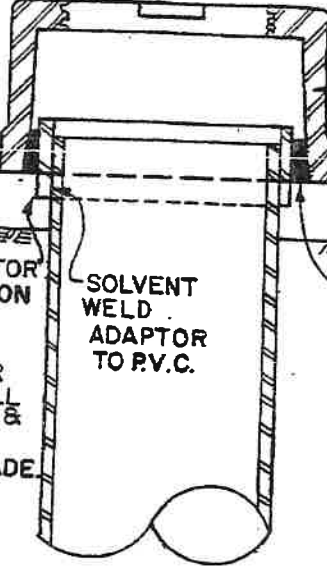
Y-BRANCH

CONTRACTOR TO INSTALL A SHORT PIECE OF PIPE AND CAP. INSTALLATION TO BE BLOCKED AND BRACED FOR AIR TEST.

PROPERTY LINE  
 PRIVATELY OWNED ← COUNTY OWNED →

1" OR LESS RISER TO BE INSTALLED BY CONTRACTOR

SPIGOT END ADAPTOR BUSHING FOR USE ON SDR 35 P.V.C. PIPE RISER ONLY.  
 FOR TYPE B, PLUMBER TO CUT RISER, INSTALL Y-BRANCH, 1/8 BEND & PIPE TO HOUSE; AND ADJUST RISER TO GRADE.



PANELLA CLEAN-OUT WITH COUNTER-SUNK HEAD.

FINISHED GRADE

PIPE SEAL GASKET

SOLVENT WELD ADAPTOR TO P.V.C.

DETAIL FOR NON-TRAFFIC AREA ONLY

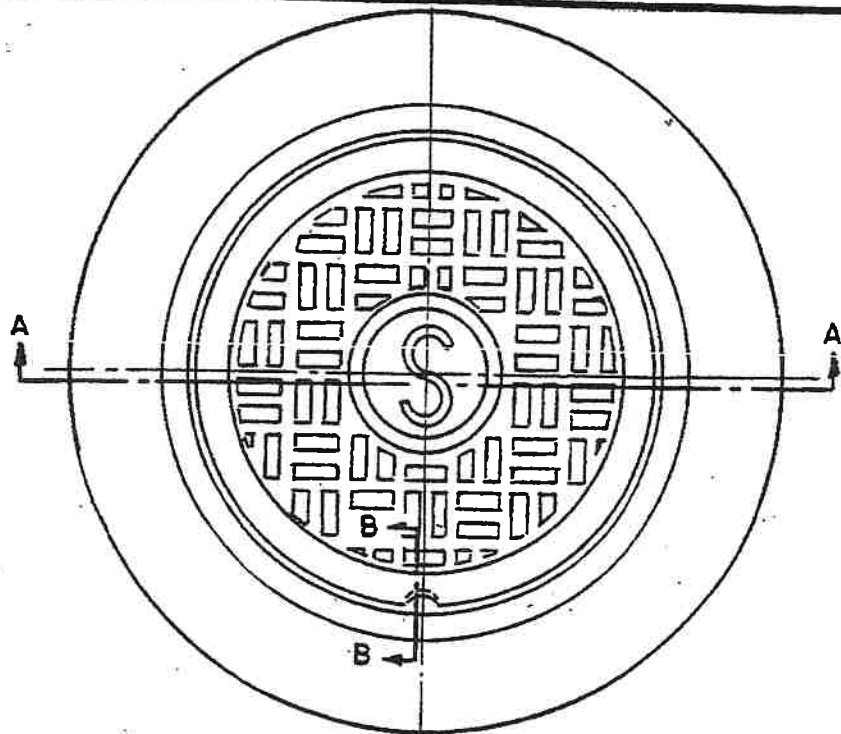
NOTE:

1. FOR PAVED AREAS (INCLUDING SIDEWALKS) SEE CLEANOUT COVER ASSEMBLY DETAIL
2. FOR CLEANOUTS SUBJECT TO AIR TESTS CONTRACTOR TO EITHER PLACE WEIGHT ON RISER, OR RESTRAIN RISER TO Y-BRANCH
3. RISER PIPE TO BE DUCTILE PIPE FOR DEPTHS LESS THAN 4 FOOT OR GREATER THAN 20 FOOT.
4. CLEANOUT TO BE LEFT A MINIMUM OF 2 FOOT ABOVE GRADE UNTIL THE CONNECTION IS MADE BY THE PLUMBER.

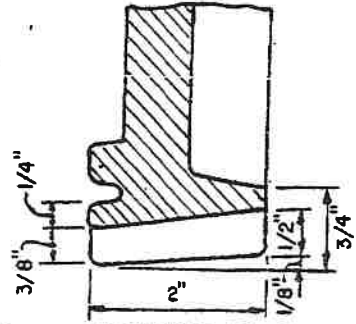
4" PIPE TO MAINLINE SEWER INSTALLED PER STANDARD CONNECTION DETAIL.

ELEVATION

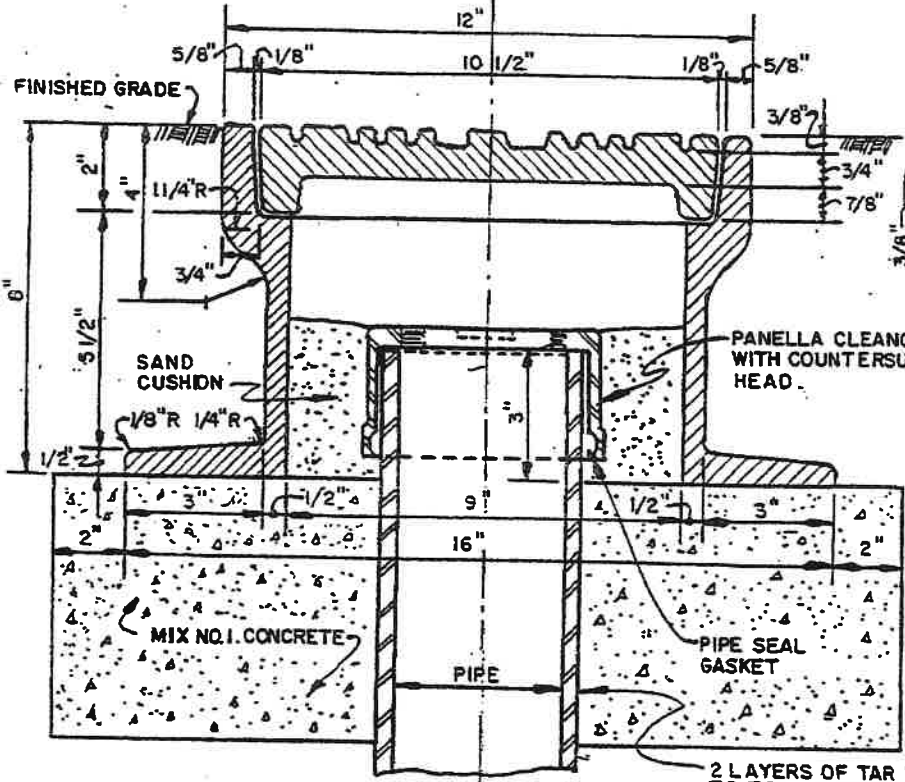
NOTE: ASSEMBLY TO BE USED  
IN ROADWAYS, SIDEWALKS,  
DRIVEWAYS, AND ALL  
OTHER PAVED AREAS.



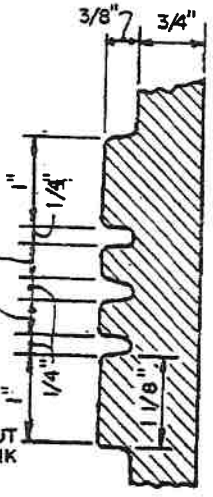
PLAN



SECTION B-B



SECTION A-A



DETAIL OF CORRUGATIONS